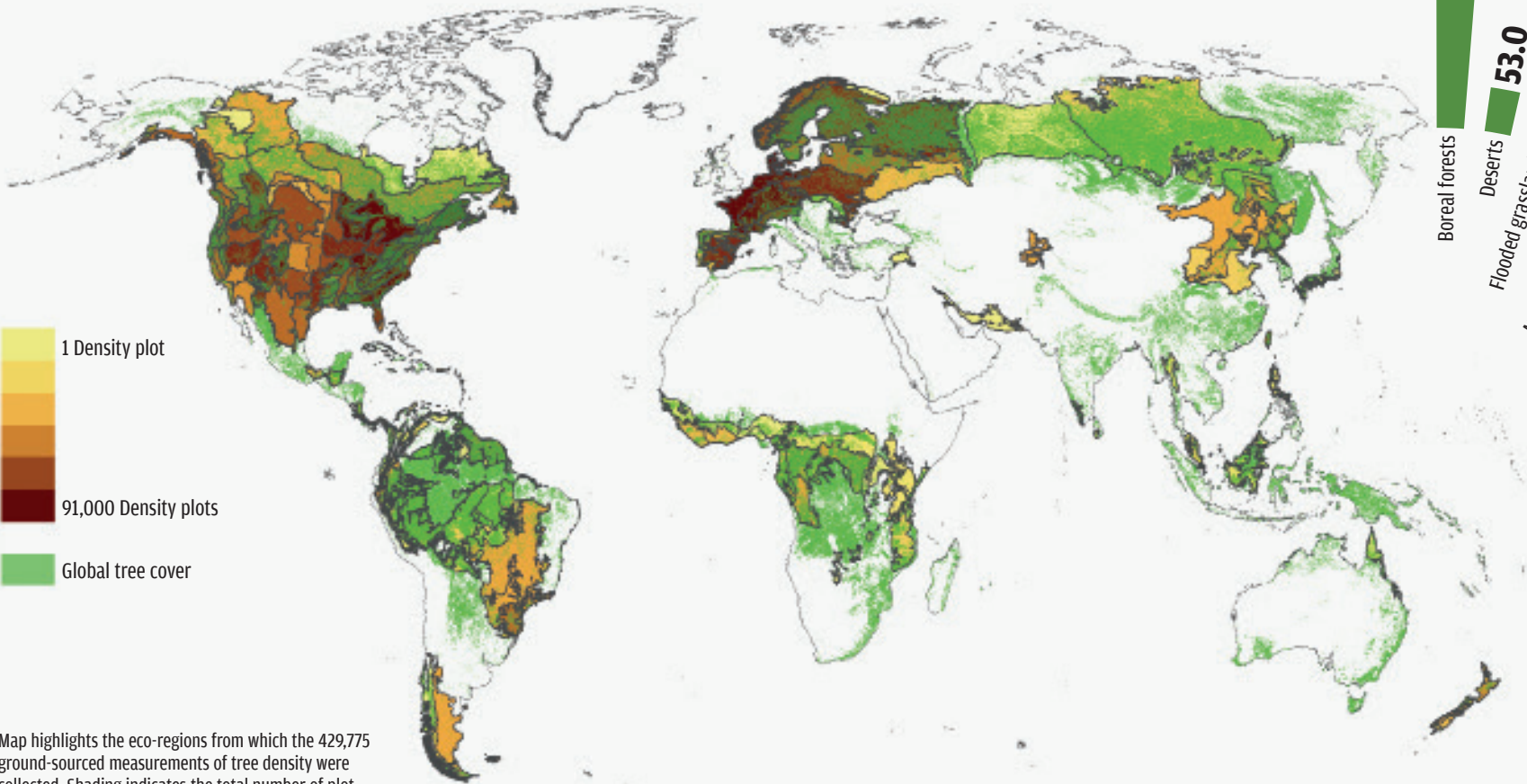




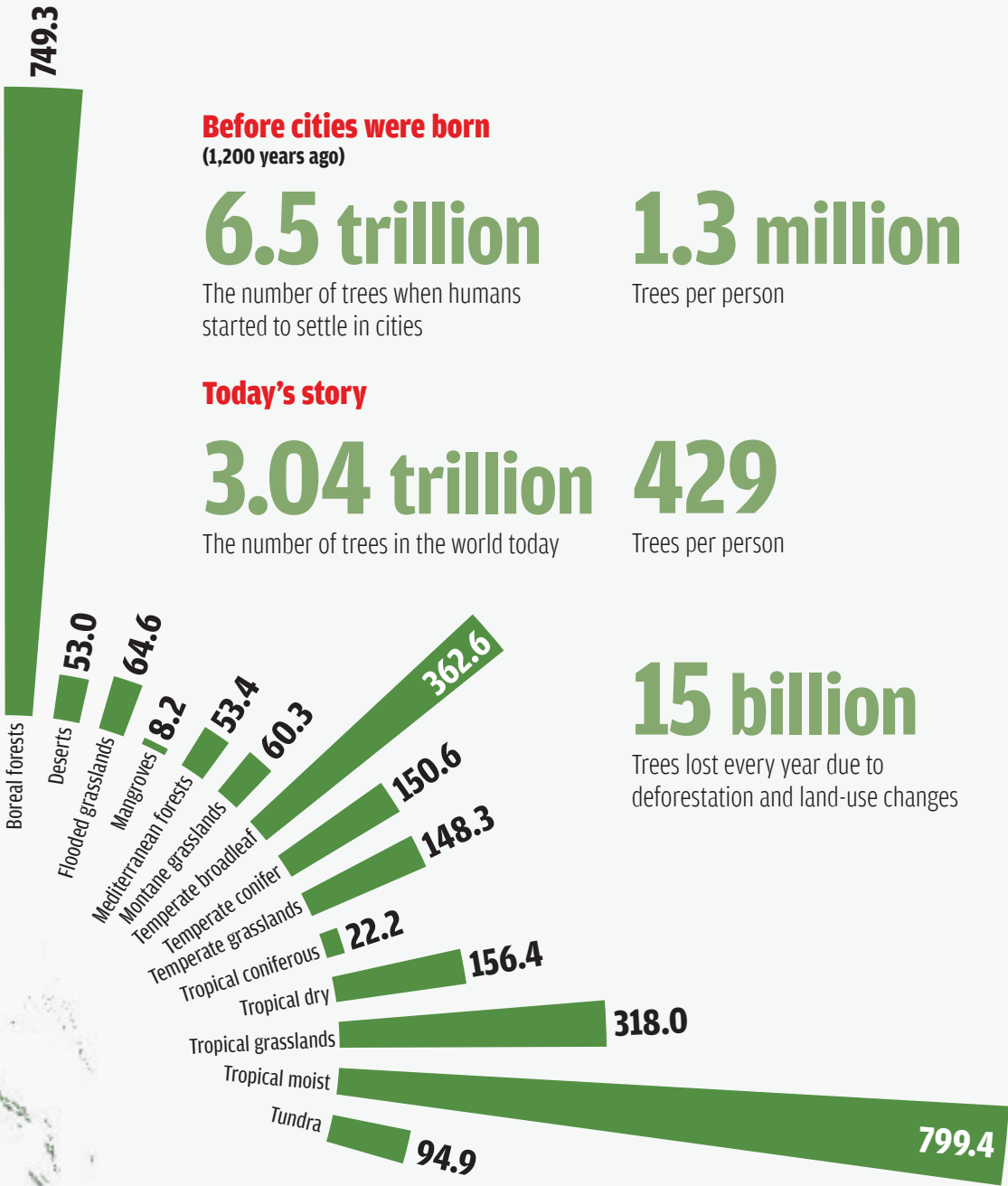
TREE TALE

As one billion people in 192 countries pledge to do their bit to save trees this Earth Day on April 22, the conflict between human habitats and trees becomes clearer. Tree growth is condusive in wetter and warmer regions, which even humans prefer. As a result, trees are now forced to grow in dry regions such as the American West



Map highlights the eco-regions from which the 429,775 ground-sourced measurements of tree density were collected. Shading indicates the total number of plot measurements collected in each eco-region. A global forest map was overlaid in green to highlight that collected data span the majority of forest ecosystems on a global scale. A tree is defined as a plant with woody stems larger than 10 cm diameter at breast height

Prepared by DTE-CSE Data Centre
Infographics: Raj Kumar Singh; Analysis: Rajit Sengupta
Data source: Mapping tree density at a global scale report, published in Nature on September 10, 2015. For more such infographics visit: www.downtoearth.org.in/infographics



Before cities were born
(1,200 years ago)

6.5 trillion

The number of trees when humans started to settle in cities

1.3 million

Trees per person

Today's story

3.04 trillion

The number of trees in the world today

429

Trees per person

15 billion

Trees lost every year due to deforestation and land-use changes

Trees in major terrestrial biomes (in billions)

Number of trees per person

Deforestation and changes in land-use patterns are the major reasons for the loss of trees



FALKLAND*

282,900



INDIA

28



SINGAPORE

Less than one



SAUDI ARABIA



MALDIVES

*British overseas territory