

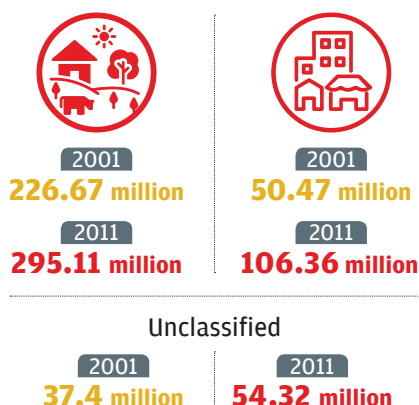
# Migration for employment

Women accounted for over 80 per cent of the marginal migrant workforce in 2011, who are unemployed for at least half of the year

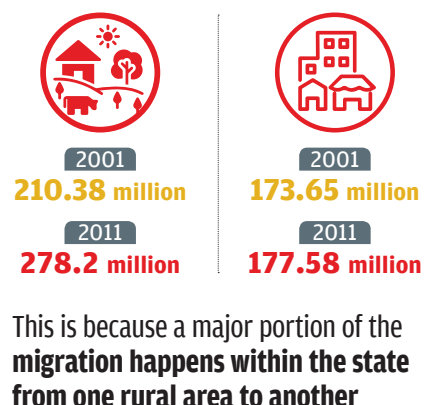
## Overall migrant population up by 44.9%



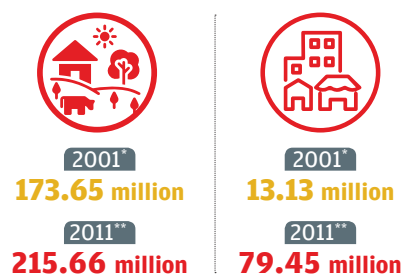
## Rural migrate more than urban



## Rural areas see more immigration

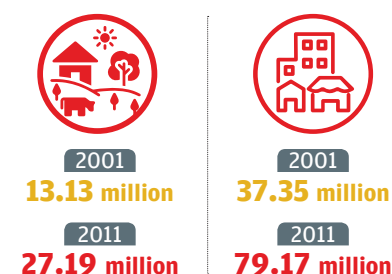


## Rural population\* migrate most to other rural areas



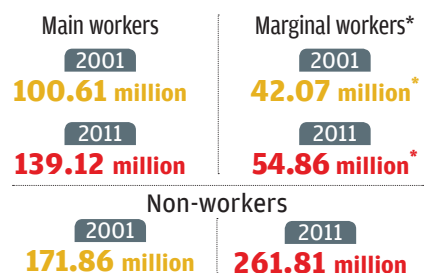
\* 226,667,548: 2001 rural migrant population  
295,114,410: 2011 rural migrant population

## Urban population\* migrate most to other urban areas



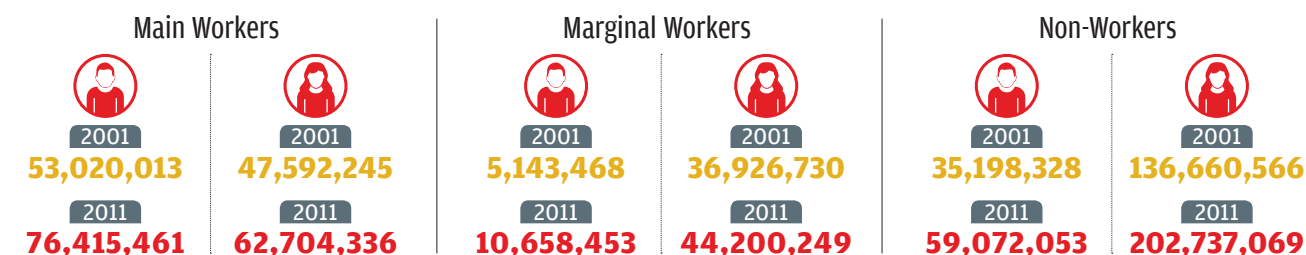
\*50,474,068: 2001 urban migrant population  
106,355,920: 2011 urban migrant population

## Worker-wise migrant population



\*Employed for less than 6 months in past year  
Of the marginal workers, 19% were seeking jobs in 2001. The share increased to 38% in 2011

## While men account for bulk of main workers, women have a higher share in marginal workers



Source: Table D-6: migrants by place of last residence, economic activity, age, sex and duration of residence in census 2001 and 2011  
Figures rounded off to two places of decimal; due to rounding, some totals may not correspond with the sum of the separate figures