

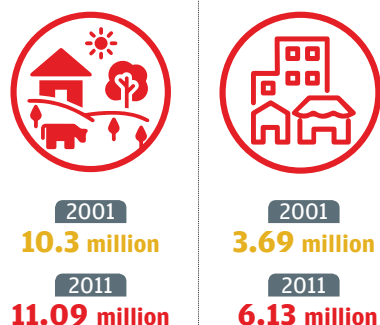
NEW MIGRANTS

Most of the population that have migrated for work less than 10 years ago have not studied beyond schooling

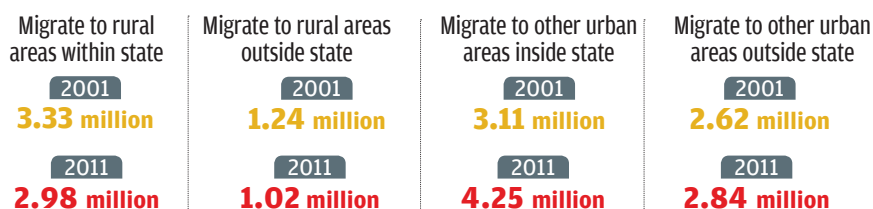
There has been a 23 per cent increase in the population that has migrated for work in the decade before the two census



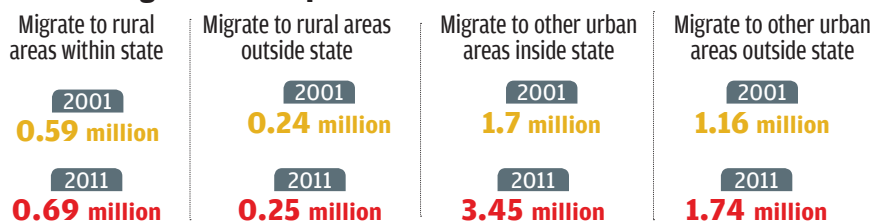
Most new migrants* are from rural areas



Most new rural migrants go to urban areas within state for work

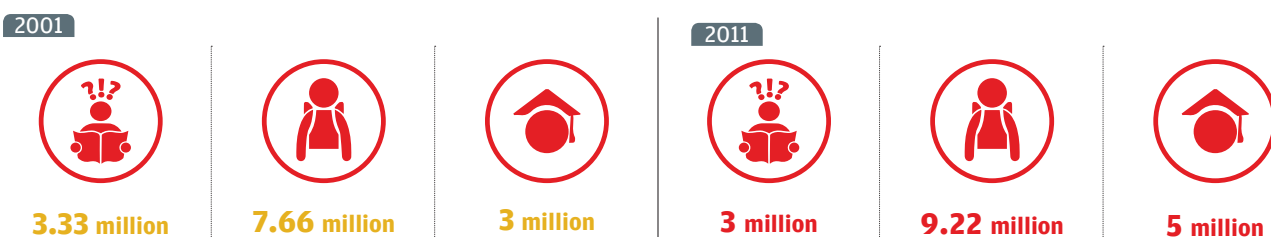


Urban migrants also prefer other urban areas within state

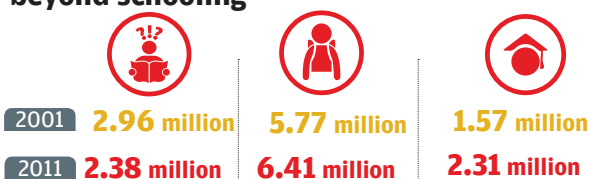


* migrated 0-9 years ago

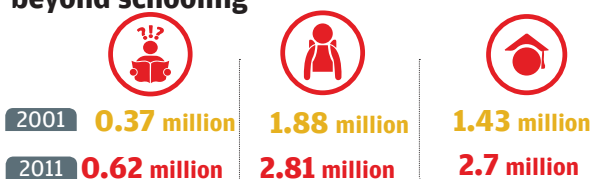
Population who have studied till schooling migrate the most



21% rural migrants in 2011 studied beyond schooling



44% urban migrants in 2011 studied beyond schooling



Source: Table D-7: Migrants by place of last residence with duration 0-9 years reporting 'work/employment' as reason for migration by age, sex and educational level in census 2001 and 2011

Figures rounded off to two places of decimal; due to rounding, some totals may not correspond with the sum of the separate figures